

Set of rocks with engravings from Penedo do Ferro (Monforte, Portugal)

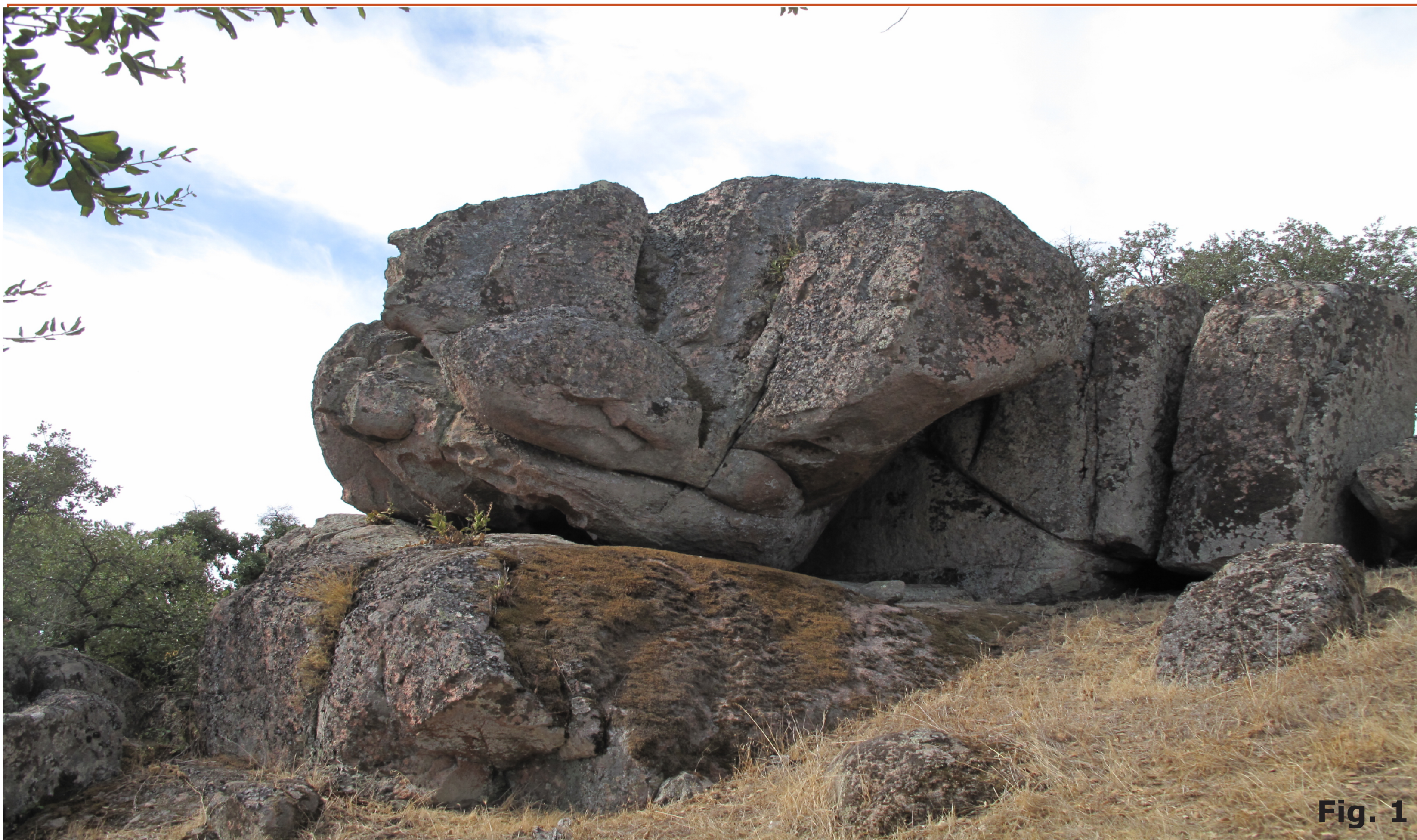


Fig. 1



Fig. 2

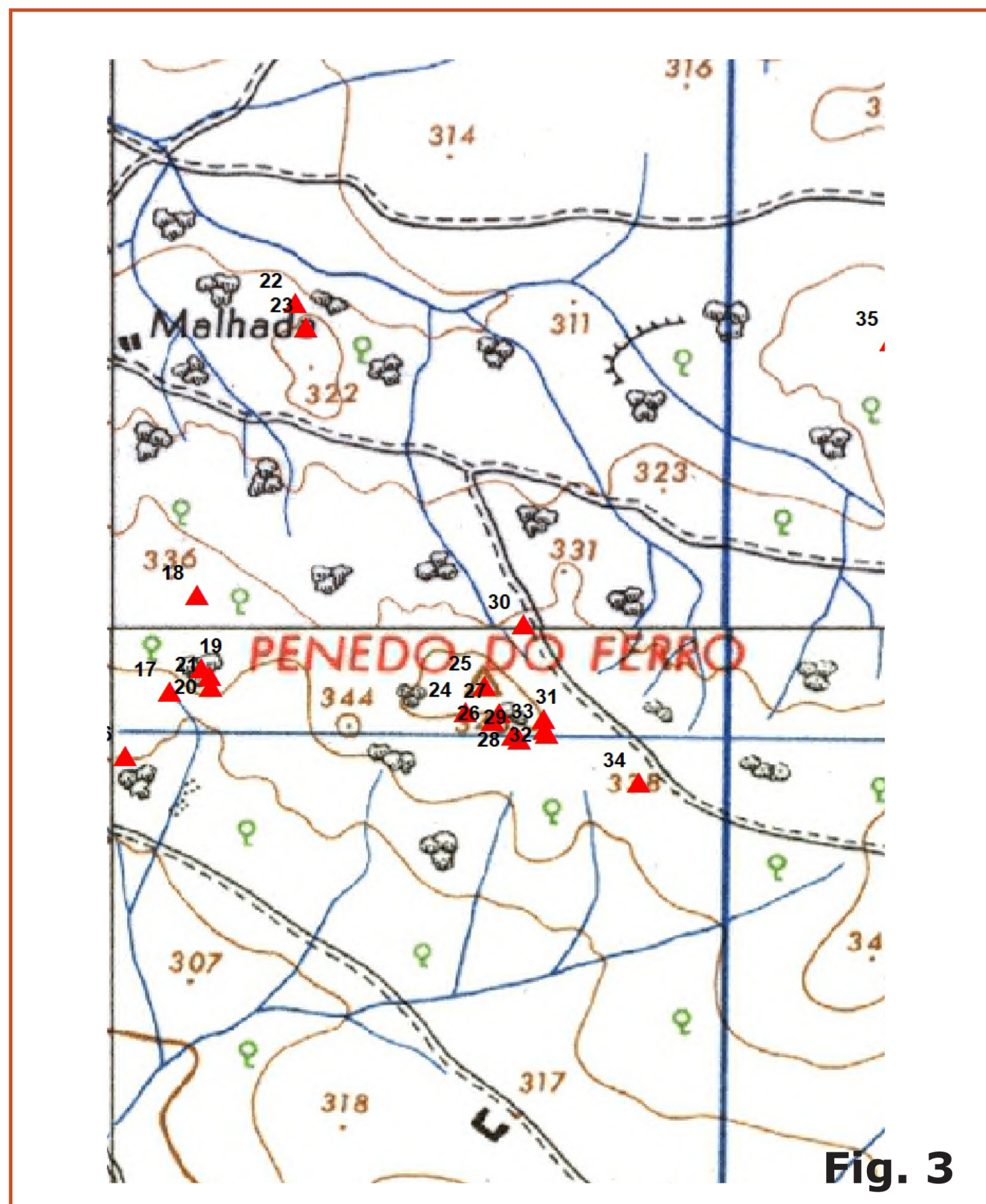


Fig. 3

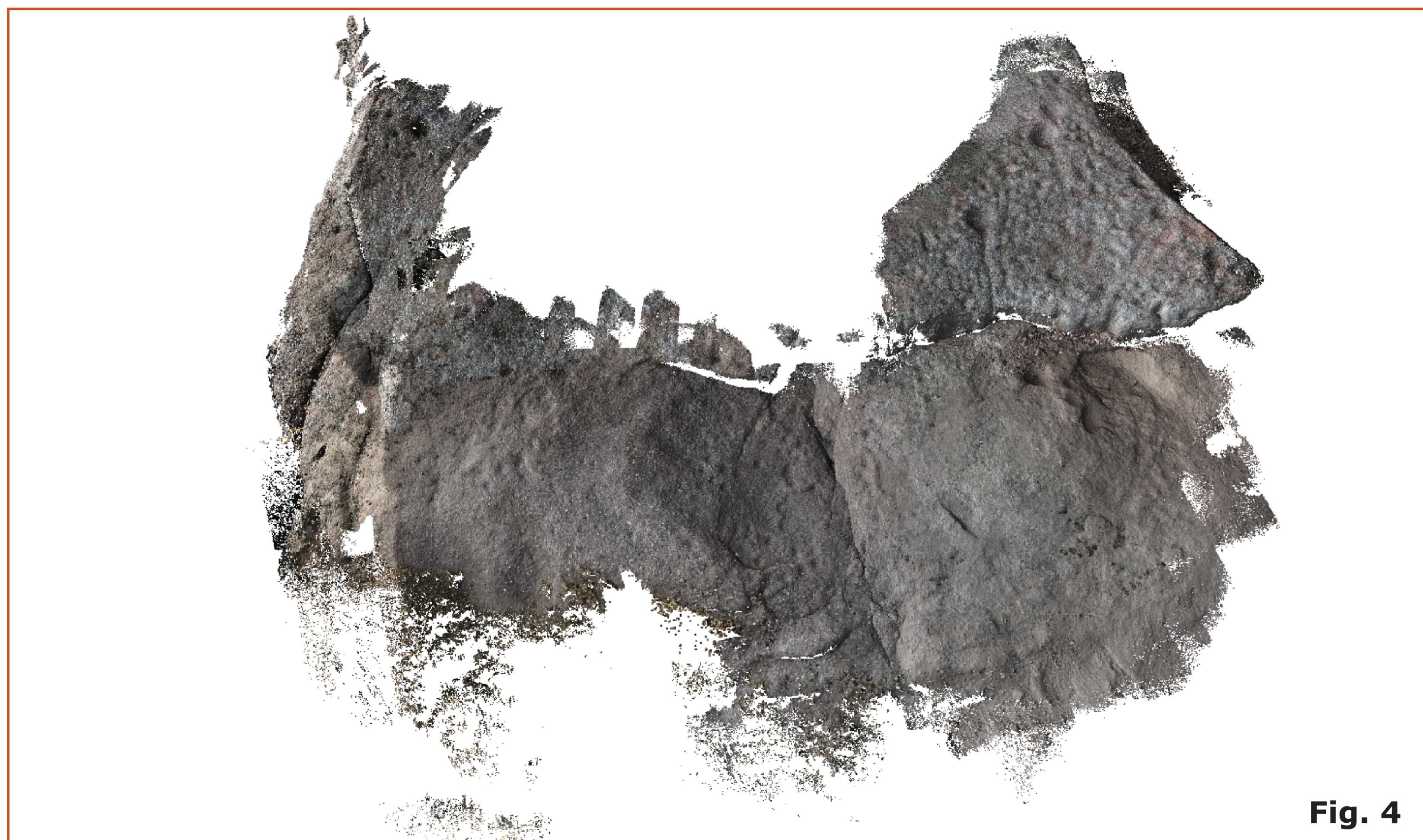


Fig. 4

Abstract:

During the present research project, in the area of Monforte, from the responsibility of the signatories, have been identified some stones showing rock art in open area.

Here we present the case of the Penedo do Ferro's settlement, where a significant set of rock art was identified in small shelters and isolated rocks, around the settlement which corresponds to a large prehistoric open-air sanctuary.

Therefore, the aim of the communication will be to show how the use of photogrammetry techniques might help to a better documentation in rock art studies.

Location:

The Penedo do Ferro settlement is located in an elongated hill, surrounded by outcrops in granite, with east-west direction, at 350m of height and good visibility on the surrounding area.

The proto-historical settlement, located in area with previous Neolithic occupation constituted of a settlement (which occupies the plain area around), around the hill where is the open-air sanctuary.

The prehistoric sanctuary consists of a set of seven small granite blocks, which surround the hill of Penedo do Ferro (Fig. 3).

Description of the open air sanctuary:

The work done so far consisted of the registration (GPS) of all the Panels and photographic survey in order to carry out the photogrammetric survey, of each one.

Subsequently we intend to carry out a 3D survey of the area, using a drone.

Panel I

It is located in a shelter (the largest of this group), open to the North, located at the southern limit of the Penedo do Ferro, with visibility over the Neolithic settlement (Fig.1). It has a panel with dozens of cups of different dimensions (Fig. 2) in the base (floor of the shelter).

Panel II

Isolated block of granite, which has at least 16 cups, some of which are interconnected. It is on the edge of the prehistoric village turned north, to the platform of the Neolithic settlement.

Panel III

It consists of two isolated granite blocks that are located about 2m apart, at the southwestern border of Penedo do Ferro, facing the Neolithic settlement.

Block I - has 15 cups at the top

Block II - has 4 cups aligned, at the top

Panel IV

An isolated granite outcrop on the SW side of the Penedo do Ferro at the base of the wall. It has 4 cups at the top and at least 7, on a sloping face facing SW.

Panel V

Isolated granite block, small on the SW side of settlement of Penedo do Ferro, at the base of the wall. It has 7 shallow cups.

Panel VI

Granite outcrop next to a holm oak, on SW of Penedo do Ferro, at the base of the wall. It is located about 5m from Panel V, to NE. It has 8 cups facing NE.

Panel VII

It is located about 20m west of Panel VI. Granite block showing 13 cups at the top.